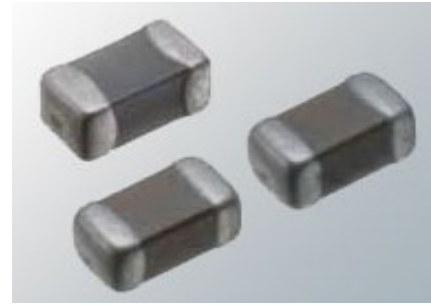




Multilayer Chip Large Current Bead 叠层片式大电流磁珠

FEATURES 特点

- Multilayer monolithic construction yields high reliability
独石结构、高可靠性
- A unique terminal electrode structure ensures high permissible current, 4A max.
特别的设计可承受最大4A的电流
- High impedance over a wide frequency range
在较宽的频段具有高阻抗



APPLICATIONS 应用

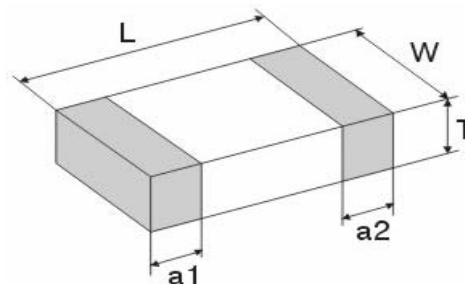
- Video equipment, audio equipment 视频音频设备
- Automotive electrical equipment 电气自动化设备
- Communication equipment 通讯设备
- OA equipment and other OA设备及其它领域

Product Identification 产品标识

MGLB 2012 M 101 T - LF
① ② ③ ④ ⑤ ⑥

- ① MOTTO Series name 系列名称
- ② Dimension 产品尺寸 L×W: 【2012= 2.0mm×1.2mm】
- ③ Material code 材料代码
- ④ Impedance 阻抗值: 【100=10Ω 101=100Ω 102=1000Ω】
- ⑤ Packing Style: 【 T: Taping 编带盘装 B: Bulk 散装】
- ⑥ Lead free products 无铅产品

Shapes And Dimensions 外形及尺寸示意图



Type 型号	Dimensions (mm) [inch]			
	L长	W宽	T高	a1, a2
1005 [0402]	1.00±0.15 [0.04±0.006]	0.50±0.15 [0.02±0.006]	0.50±0.15 [0.02±0.006]	0.25±0.10 [0.01±0.004]
1608 [0603]	1.60±0.15 [0.063±0.006]	0.80±0.15 [0.031±0.006]	0.80±0.15 [0.031±0.006]	0.30±0.20 [0.012±0.008]
2012 [0805]	2.00±0.20 [0.079±0.008]	1.25±0.20 [0.049±0.008]	0.85±0.20 [0.033±0.008]	0.50±0.30 [0.02±0.012]
3216 [1206]	3.20±0.20 [0.126±0.008]	1.60±0.20 [0.063±0.008]	0.90±0.20 [0.035±0.008]	0.50±0.30 [0.02±0.012]



Multilayer Chip Large Current Bead 叠层片式大电流磁珠

Electrical Characteristics 电气性能

MGLB 1005 (0402) Series

MOTTO Part No.	Impedance (Ω) $\pm 25\%$	Z Test Freq. (MHz)	RDC(Ω) /max	I _r (mA) /max
MGLB1005M050	5	100	0.05	2000
MGLB1005M110	11	100	0.05	2000
MGLB1005M310	31	100	0.06	1500
MGLB1005M600	60	100	0.08	1500
MGLB1005M121	120	100	0.10	1200
MGLB1005M221	220	100	0.15	1000
MGLB1005M301	300	100	0.20	1000

MGLB 1608 (0603) Series

MOTTO Part No.	Impedance (Ω) $\pm 25\%$	Z Test Freq. (MHz)	RDC(Ω) /max	I _r (mA) /max
MGLB1608M050	5	100	0.03	2000
MGLB1608M110	11	100	0.03	2000
MGLB1608M310	31	100	0.05	1500
MGLB1608M600	60	100	0.08	1500
MGLB1608M121	120	100	0.10	1200
MGLB1608M221	220	100	0.15	1000
MGLB1608M301	300	100	0.20	1000
MGLB1608M501	500	100	0.28	800
MGLB1608M601	600	100	0.35	800



Multilayer Chip Large Current Bead 叠层片式大电流磁珠

MGLB 2012 (0805) Series

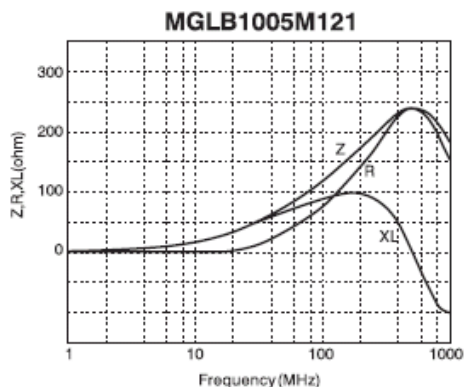
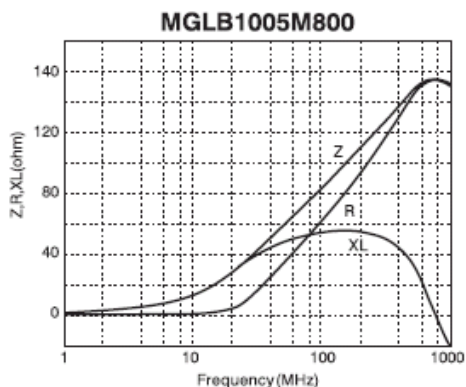
MOTTO Part No.	Impedance (Ω) $\pm 25\%$	Z Test Freq. (MHz)	RDC(Ω) /max	Ir(mA) /max
MGLB2012M070	7	100	0.02	4000
MGLB2012M110	11	100	0.02	3000
MGLB2012M310	31	100	0.03	3000
MGLB2012M600	60	100	0.05	3000
MGLB2012M101	100	100	0.08	2000
MGLB2012M121	120	100	0.10	2000
MGLB2012M181	180	100	0.15	2000
MGLB2012M221	220	100	0.17	2000
MGLB2012M301	300	100	0.20	1500
MGLB2012M601	600	100	0.25	1200
MGLB2012M102	1000	100	0.30	1000

MGLB 3216 (1206) Series

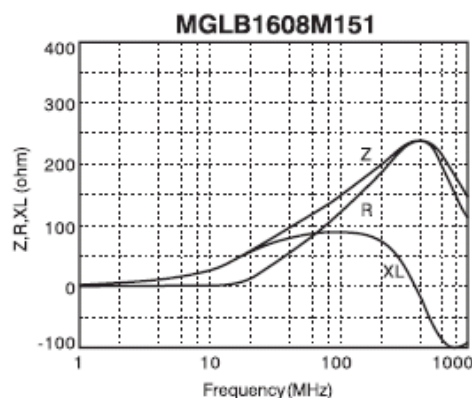
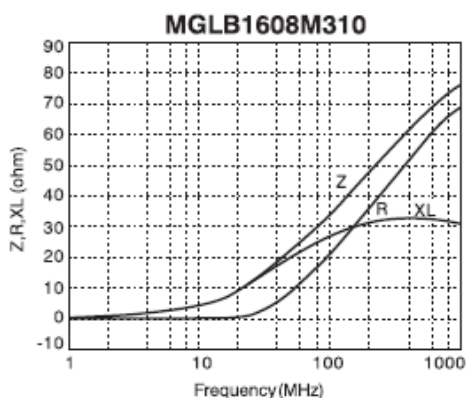
MOTTO Part No.	Impedance (Ω) $\pm 25\%$	Z Test Freq. (MHz)	RDC(Ω) /max	Ir(mA) /max
MGLB3216M110	11	100	0.02	4000
MGLB3216M190	19	100	0.02	4000
MGLB3216M260	26	100	0.02	4000
MGLB3216M310	31	100	0.02	4000
MGLB3216M700	70	100	0.05	3000
MGLB3216M121	120	100	0.05	3000
MGLB3216M181	180	100	0.10	2500
MGLB3216M221	220	100	0.10	2500
MGLB3216M301	300	100	0.15	2200
MGLB3216M601	600	100	0.20	2000
MGLB3216M102	1000	100	0.30	1500
MGLB3216M122	1200	100	0.30	1200
MGLB3216M152	1500	100	0.35	1000
MGLB3216M202	2000	100	0.45	700

Characteristic curve 特性曲线

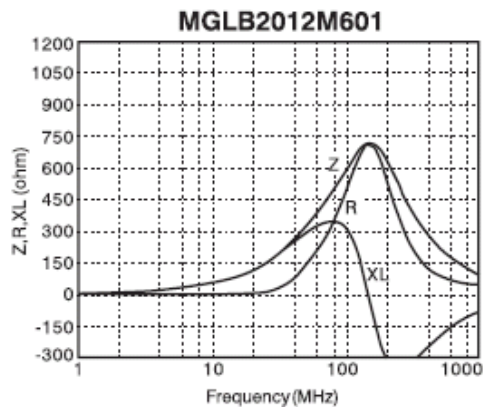
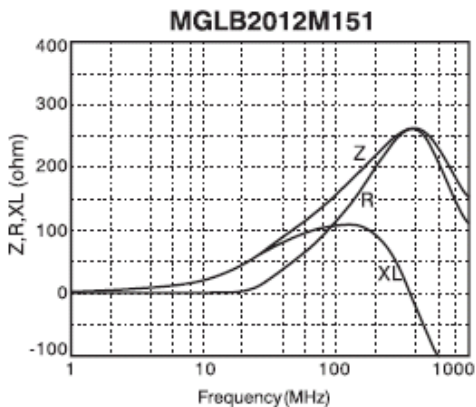
MGLB 1005 (0402) Series



MGLB1608 (0603) Series



MGLB 2012 (0805) Series



MGLB 3216 (1206) Series

